



It's who
you move
with.

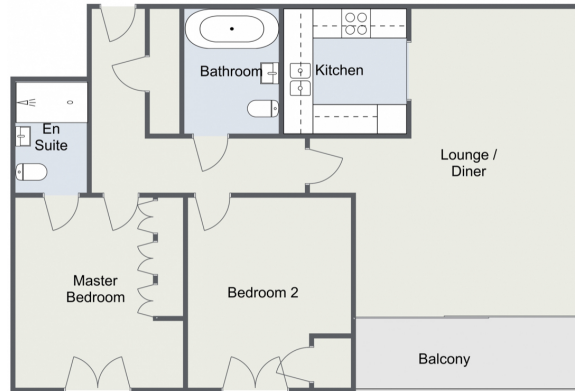
Aston Court, Basin Road, Worcester, WR5 3FR

Offers Over £325,000

🛏️ 2 🚿 2 🚻 1



Basin Road, Worcester
Ground Floor

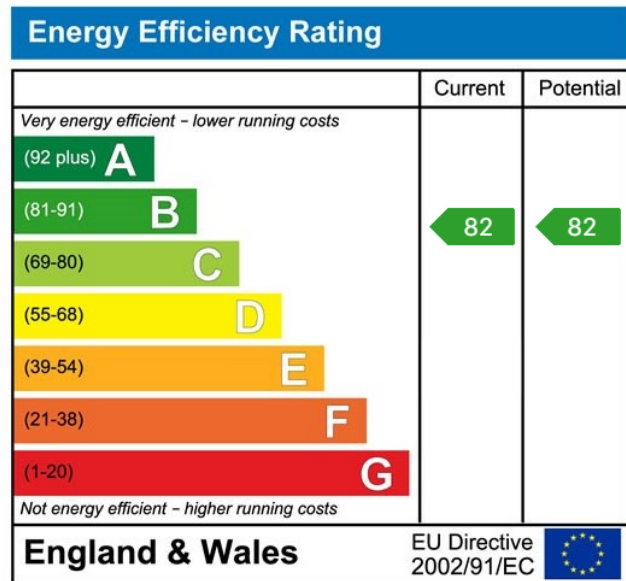


Total Area
Approx
87.7 sq m
944.0 sq ft

For illustrative purposes only. Decorative finishes, fixtures & fittings do not represent the current state of the property. Measurements are approximate & not to scale. Floor Plans made using RoomSketcher.



A great opportunity to live in a beautiful and spacious, two double bedroom, ground floor apartment with an undisturbed view looking out over to the river. Situated in Diglis Basin, close to the city centre, the cosmopolitan bars, and restaurants. Modified to a high specification by the owners who have owned since new. To include granite work surfaces, built in wardrobes, and Karndean flooring. Used as a second home this immaculate apartment has hardly been lived in. Available with no onward chain. Entrance hall, fitted kitchen which opens up into dining space and living area. A private balcony that enjoys the evening sun. En suite to the main bedroom and separate bathroom. The property benefits from gas central heating, storage, parking, and a bike store. Viewing highly recommended to appreciate the position, view and quality this lovely apartment offers.



For more information on this house or to arrange a viewing please call the office on:

01905 958 290

Alternatively, you can scan the QR to view all of the details of this property online.

