

Dark Lane, Romsley, Halesowen, B62 0PW

£749,950

🛏 3 🚿 2 🚗 2



- Master Suite with Dressing Room and En Suite
- Modern Bathroom and Downstairs WC
- Attractive Shaker Kitchen
- Self-Contained One Bedroom Annexe - Ideal for Multi-Generation Living or Rental Income
- Long Driveway providing Off Road Parking and Access to Detached Double Garage
- Two Further Bedrooms
- Two Reception Rooms
- Separate Utility Room
- Well-Maintained Gardens
- Built in mid 1800s with Character Features Throughout

For more information on this house or to arrange a viewing please call the office on:

0121 453 4349

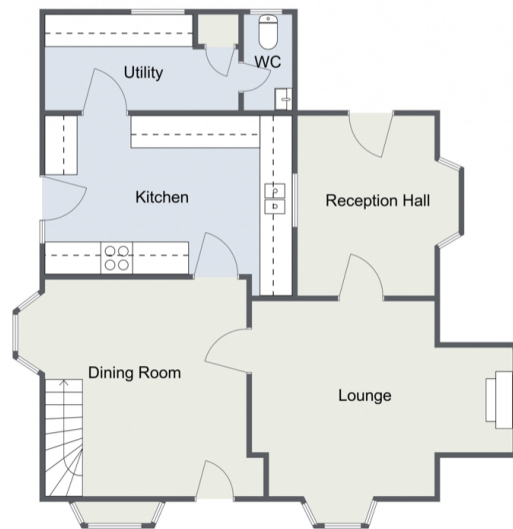
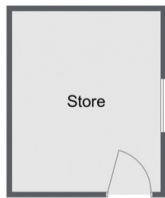
Alternatively, you can scan the QR to view all of the details of this property online.



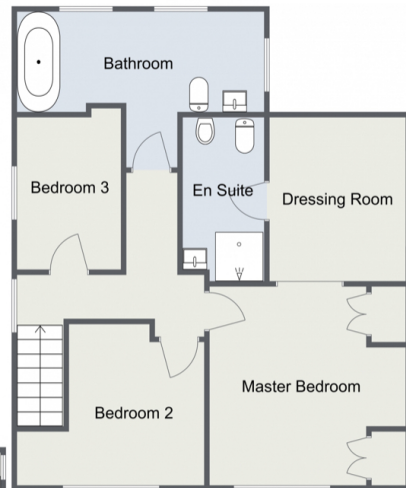


Dark Lane, Romsley

Ground Floor



First Floor



Total Area Approx
201.6 Sq M
2170.00 Sq Ft

For illustrative purposes only. Decorative finishes, fixtures & fittings do not represent the current state of the property. Measurements are approximate & not to scale. Floor Plans made using RoomSketcher.

This charming and characterful three bedroom detached cottage was originally built in mid 1800s, and is offered with an attractive Shaker kitchen, two reception rooms, master suite with dressing room and en suite, landscaped garden, driveway with detached double garage and a self-contained one bedroom annexe - ideal for multi-generation living or rental income, situated in the picturesque village of Romsley, near Halesowen.