






It's who
you move
with.

Evesham Road, Crabbs Cross, Redditch B97 5JA

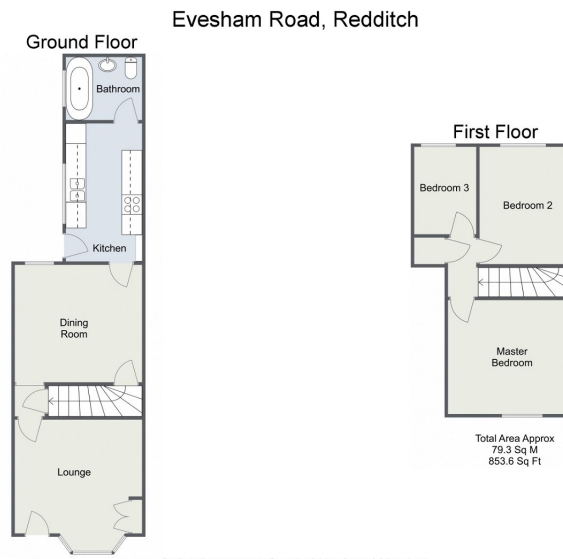
£235,000

 3  1  2



An ideal opportunity for an investor with a tenant in situ, a beautifully presented three bedroom mid terrace property offered with lounge, dining room, ground floor bathroom, pleasant rear garden and situated in the popular location of Crabbs Cross, Redditch.





For illustrative purposes only. Decorative finishes, fixtures & fittings do not represent the current state of the property. Measurements are approximate & not to scale. Floor Plans made using RoomSketcher.

29/05/2023, 10:55 Energy performance certificate (EPC) - Find an energy certificate - GOV.UK

Energy performance certificate (EPC)		
371, Evesham Road REDDITCH B97 6AA	Energy rating D	Valid until: 22 April 2029 Certificate number: 2275-6099-7204-6541-0930

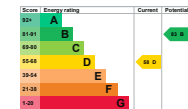
Property type: Mid-terrace house
Total floor area: 76 square metres

Rules on letting this property

Properties can be let if they have an energy rating from A to E.
You can read [guidance for landlords on the regulations and exemptions](https://www.gov.uk/guidance/domestic-estate-letting-property-minimum-energy-efficiency-standard-landlord-obligation) (<https://www.gov.uk/guidance/domestic-estate-letting-property-minimum-energy-efficiency-standard-landlord-obligation>).

Energy rating and score

This property's current energy rating is D. It has the potential to be B.
[See how to improve this property's energy efficiency.](#)



The graph shows this property's current and potential energy rating.

Properties get a rating from A (best) to G (worst) and a score. The better the rating and score, the lower your energy bills are likely to be.

For properties in England and Wales:
the average energy rating is D
the average energy score is 50

<https://find-energy-certificates.service.gov.uk/energy-certificate/2275-6099-7204-6541-0930?property>

1/4

For more information on this house or to arrange a viewing please call the office on:
01527 540 654

Alternatively, you can scan the QR to view all of the details of this property online.

