



Leach Green Lane, Rednal, Birmingham, B45 8DX

£430,000

4 1 2



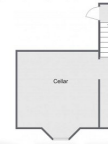
- Four Generous Bedrooms
- Luminous Lounge with Feature Fireplace
- Modern Kitchen with Integrated Appliances
- Dining Room
- Cellar
- Family Bathroom
- Rear Garden
- Off Road Parking





Leach Green Lane, Rednal

Lower Ground Floor



First Floor



Ground Floor



Second Floor



Total Area Approx
175.8 Sq M
1892.3 Sq Ft

For illustrative purposes only. Decorative finishes, fixtures & fittings do not represent the current state of the property. Measurements are approximate & not to scale. Floor Plans made using RoomSketcher.

A charming four-bedroom, semi-detached traditional residence featuring lofty ceilings throughout. This property boasts convenient off-road parking, a welcoming lounge adorned with a bay window, a modern and stylish kitchen, a family bathroom, and an additional cellar space. Ideally situated in the desirable locale of Rednal.

For more information on this house or to arrange a viewing please call the office on:

0121 453 4349

Alternatively, you can scan the QR to view all of the details of this property online.



arden
ESTATE AGENTS