



Meadowfield Road, Rubery, Birmingham, B45 9BY

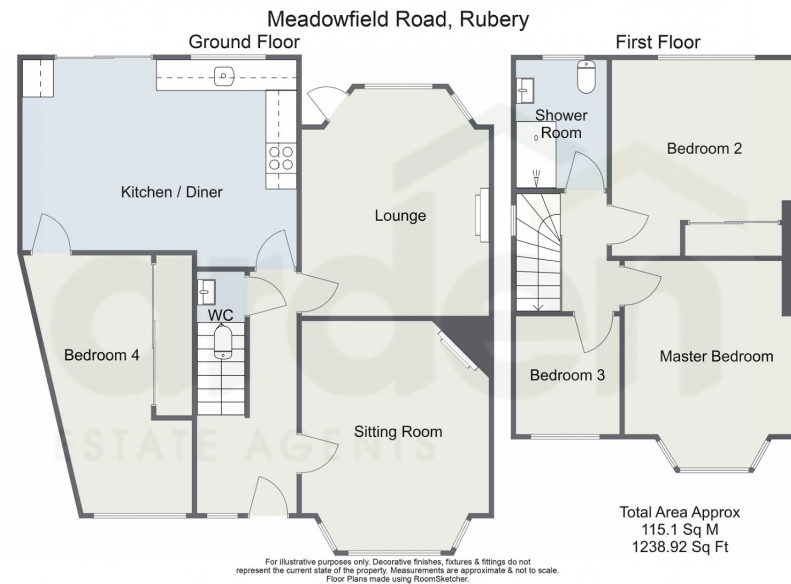
£375,000

4 1 2



- Four Bedrooms
- Sitting Room with Bay Windows
- Downstairs WC
- Rear Garden
- Lounge with Featured Fireplace
- Spacious Kitchen with Integrated Appliances
- Modern Shower Room
- Driveway for Off Road Parking





Presenting a charming four-bedroom semi-detached property in Rubery, Birmingham. This inviting home boasts a driveway for convenient off-road parking, complemented by two elegant reception rooms adorned with fireplaces and bay windows. The spacious kitchen offers functionality and style, while a modern shower room adds convenience. Outside, a rear garden provides a tranquil retreat.

3/13/24, 9:57 AM Energy performance certificate (EPC) - Find an energy certificate - GOV.UK

Energy performance certificate (EPC)

57 Meadowfield Road Rubery B281XJHAM B46 5BY	Energy rating C	Valid until 11 March 2034
		Certificate number 2551-6415-0611-0413-0854

Property type: Semi-detached house
Total floor area: 110 square metres

Rules on letting this property

Properties can be let if they have an energy rating from A to E.

You can read [guidance for landlords on the regulations and exemptions](https://www.gov.uk/guidance/landlords-on-the-requirements-and-exemptions) (<https://www.gov.uk/guidance/landlords-on-the-requirements-and-exemptions>).

Energy rating and score

This property's energy rating is C. It has the potential to be B.

[See how to improve this property's energy efficiency.](#)

The graph shows this property's current and potential energy rating.

Properties get a rating from A (best) to G (worst) and a score. The better the rating and score, the lower your energy bills are likely to be.

For properties in England and Wales:
the average energy rating is D
the average energy score is 50

For more information on this house or to arrange a viewing please call the office on:
0121 453 4349

Alternatively, you can scan the QR to view all of the details of this property online.

