



The logo for Arden Estate Agents, featuring a green house icon above the word "arden" in a bold, white, sans-serif font, with "ESTATE AGENTS" in a smaller font below it.

It's who
you move
with.

16 Brock Close, Rednal, Birmingham, B45 9AU

Offers Over £165,000

🛏️ 2 🚿 2 🚻 1

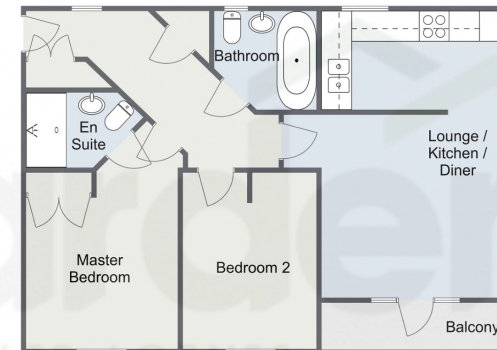


- Two Bedrooms
- Family Bathroom
- Entrance Hall with Ample Storage
- Allocated Parking
- Lounge/Kitchen/Diner with a Balcony
- Ensuite
- Expansive Loft Space
- Close to Amenities





Brock Close, Rednal



Total Area Approx
64.4 Sq M
693.2 Sq Ft

For illustrative purposes only. Decorative finishes, fixtures & fittings do not represent the current state of the property. Measurements are approximate & not to scale. Floor Plans made using RoomSketcher.

Indulge in the elegance of this well maintained third-floor apartment in Rednal, Birmingham, featuring two bedrooms, allocated parking, and a spacious lounge/kitchen/diner. With the added luxury of a family bathroom, ensuite, and expansive loft space.

For more information on this house or to arrange a viewing please call the office on:

0121 453 4349

Alternatively, you can scan the QR to view all of the details of this property online.



arden
ESTATE AGENTS