



It's who
you move
with.

Rose Cottage, Greenhill, Burcot, Bromsgrove, B60 1BJ
£549,950

🛏️ 2 🚿 1 🚻 2



Description

The ground floor accommodation comprises: Entrance hall with under stairs storage cupboard, generous triple aspect living/dining room with wood burning stove and oak french doors to the patio, high quality farmhouse kitchen with pantry cupboard leading to a garden room (enjoying superb views of the garden) and utility room.

The first floor features a landing cupboard, double bedroom and second bedroom (both with original cast iron decorative fireplaces) and a stunning bathroom with freestanding tub and separate shower enclosure.

Outside

The garden is a paradise of several zoned areas, brimming with a delightful assortment of cottage plants. From the house, you step onto a paved seating area which leads to a large lawn including a vegetable plot with two sheds and slate chipped seating area, extending further into a beautiful wooded area adorned with mature trees, creating a canopy of dappled shade for a tranquil retreat. The impressive double glazed garden office is the perfect answer to working from home, all year round.

The generous driveway at the front provides parking for several vehicles.

Services

Mains electricity, gas and water.
Drainage via a shared septic tank.

Room Dimensions

Living/Dining Room 5.49m (max) x 5.12m (max) (18'0" x 16'9")
Kitchen 2.92m x 3.02m (9'6" x 9'10")
Garden Room 2.58m x 2m (8'5" x 6'6")
Utility Room 1.58m x 1.81m (5'2" x 5'11")
Garden Office 2.4m x 3m (7'10" x 9'10")

Bedroom 1 2.98m (max) x 4.1m (9'9" x 13'5")
Bedroom 2 2.39m x 3.75m (7'10" x 12'3")
Bathroom 2.93m x 3.12m (max) (9'7" x 10'2")

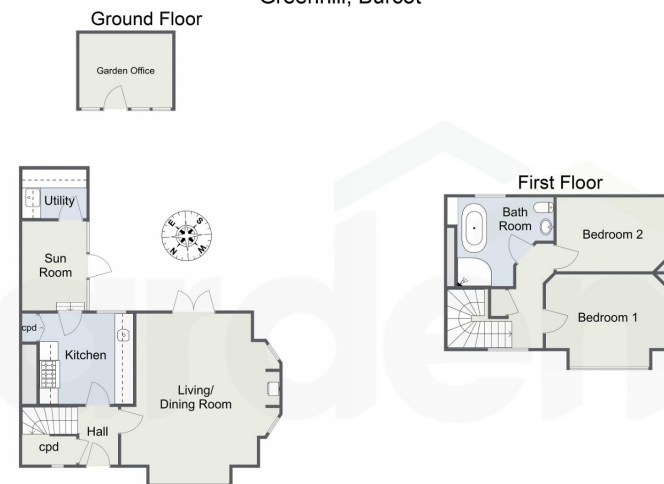




- Originally one of the gardener's cottages for Burcot Grange
- Triple aspect living/dining room with wood burner
- High quality farmhouse kitchen and utility room
- Beautiful cottage garden with garden office
- Potential opportunity for a ground floor extension
- Incredible 0.54 acre plot (approx.)
- Garden room
- Two bedrooms and stunning bathroom
- Generous driveway
- Lying amongst North Worcestershire countryside



Greenhill, Burcot



Total Approximate Area: 87.1 sq. m (937.53 sq. ft)
 Total Approximate Area (Including Garden Office): 94.3 sq. m (1,015.03 sq. ft)
 For illustrative purposes only. Decorative finishes, fixtures & fittings do not represent the current state of the property. Measurements are approximate & not to scale. Floor Plans made using RoomSketcher.

For more information on this house or to arrange a viewing please call the office on:

0121 447 8300

Alternatively, you can scan the QR to view all of the details of this property online.

