



**arden**
ESTATE AGENTS

It's who
you move
with.

Shrubbery Avenue, Worcester, WR1 1QH

£675,000

🛏️ 4 🚿 2 🚺 2



Summary:

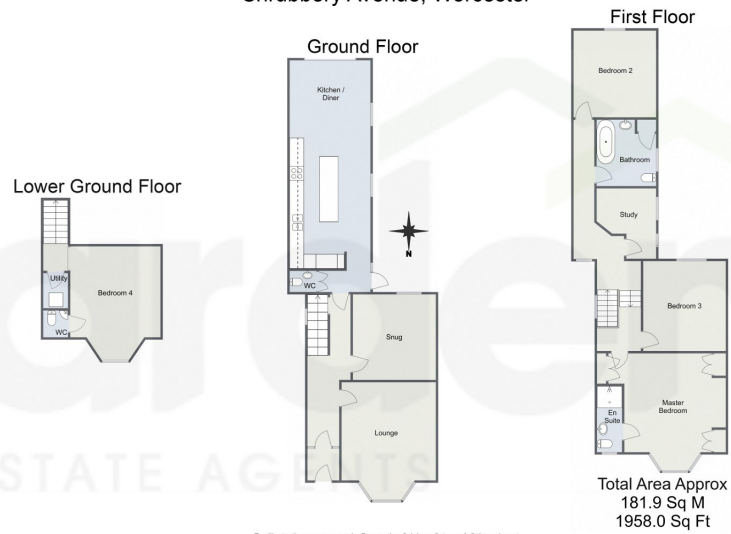
Step into a world of Victorian charm and modern sophistication with this executive period family home. Nestled on one of Worcester's few remaining Victorian streets lined with trees, this property is a true testament to the perfect blend of style and practicality. From the stunning fireplace with a log burner and feature bay window in the lounge to the bi-folding doors in the kitchen that bring the outside in, every detail has been thoughtfully designed to create a warm and welcoming home. With ample space for entertaining guests, relaxing with family, and working from home, there's no limit to what you can achieve with this property. With convenient amenities nearby such as RGS Worcester, local convenience stores, doctors' surgeries, and Gheluvelt Park, Shrubbery Avenue truly has it all. Come and discover all the possibilities that await you in this stunning property - the perfect place to call home.

Description:

As you step inside this executive period family home, you'll immediately be struck by the charming and inviting hallway, with its beautiful Minton flooring, and a staircase leading up to the first floor. You'll also have access to a handy cupboard that provides plenty of space for your storage needs. Moving to the front aspect of the property, you'll find the lounge, which boasts a stunning fireplace with a log burner, creating a cozy and relaxing atmosphere. The feature bay window floods the room with natural light, making it the perfect spot to unwind after a long day. The separate dining room/snug is a versatile space that could be used for more formal occasions or an additional casual living area. The heart of this home is the kitchen and dining area, located at the back of the property. Perfect for entertaining guests or indulging your passion for cooking, this kitchen is the epitome of comfort and style. Equipped with both base and eye level units, tiled splashback, and roll top work surfaces, all providing ample preparation space for your culinary creations. The feature island with space for two stools is perfect for informal dining or socializing with guests while cooking. You'll also find built-in appliances, including a dishwasher, a range-style cooker, and an American fridge/freezer, making meal preparation a breeze. The bi-fold doors lead out to the rear garden, creating a seamless blend



Shrubbery Avenue, Worcester



For illustrative purposes only. Decorative finishes, fixtures & fittings do not represent the current state of the property. Measurements are approximate & not to scale. Floor Plans made using RoomSketcher.

- Semi Detached Period Home
- No Onward Chain
- Lounge, Dining Room and Kitchen/Diner
- Study, W/C and Utility
- Four Bedrooms and Bathroom
- Rear Garden and Driveway
- Popular WR1 Location
- Close to Excellent Schools



For more information on this house or to arrange a viewing please call the office on:

01905 958 290

Alternatively, you can scan the QR to view all of the details of this property online.



arden
ESTATE AGENTS