

**Pegasus Court, 29 Union Road, Shirley, Solihull, B90 3BU**

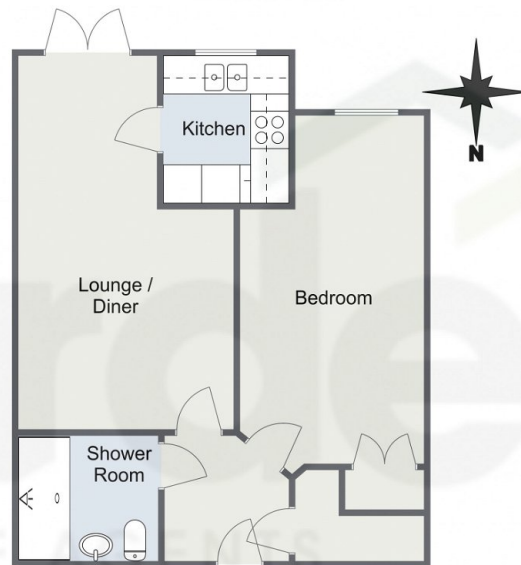
£145,000

1 1 1



- One Bedroom Ground Floor Apartment
- Sought After Location
- Retirement Living
- Residents Lounge
- 
- Patio
- Walking Distance To Local Amenities
- Shower Room
- Guest Suite
- 

Pegasus Court, Union Road, Solihull  
Ground Floor



Total Area Approx  
48.4 Sq M  
521.0 Sq Ft

For illustrative purposes only. Decorative finishes, fixtures & fittings do not represent the current state of the property. Measurements are approximate & not to scale. Floor Plans made using RoomSketcher.

Welcome to the epitome of comfortable and convenient retirement living in the heart of Shirley! This one bedroom ground floor larger style retirement apartment is a testament to sophisticated design and thoughtful planning, offering a perfect blend of tranquillity and accessibility.