

Kinton Lane, Hockley Heath, Solihull, B94 6RX

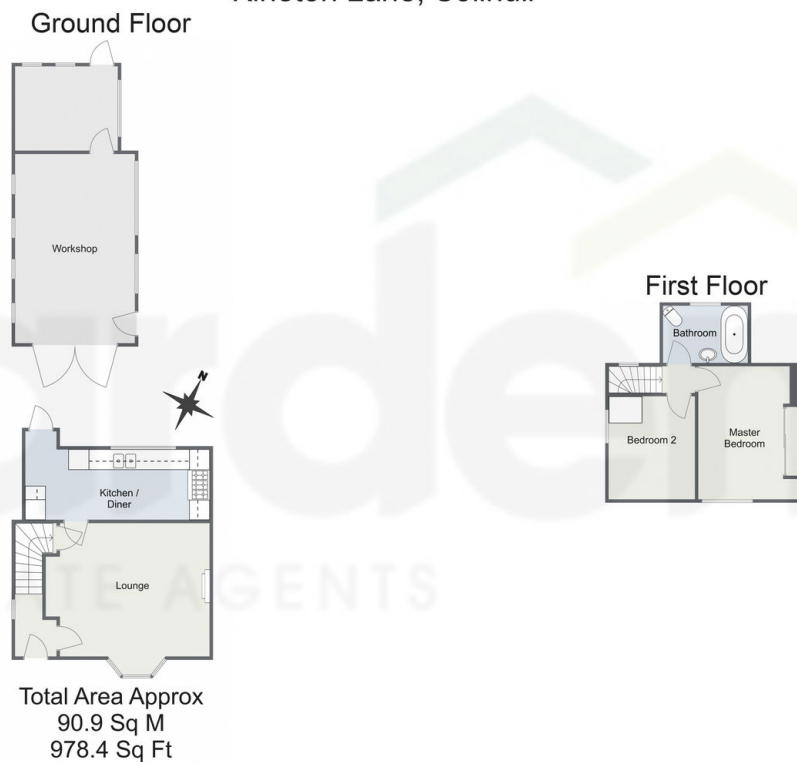
Offers In Region Of £370,000

🛏 2 🚿 1 🚗 1



- Two Bedrooms
- Off Road Parking
- Workshop In The Garden
- Sought After Location
- Recently Renovated Throughout
- Large Rear Garden
- North West Facing Garden
- Log Burner In The Lounge

Kineton Lane, Solihull



For illustrative purposes only. Decorative finishes, fixtures & fittings do not represent the current state of the property. Measurements are approximate & not to scale. Floor Plans made using RoomSketcher.

Introducing a beautifully renovated two-bedroom semi-detached home, situated in a desirable location on the outskirts of Hockley Heath. This charming property is within walking distance to the renowned Wedges Bakery and offers the convenience of off-road parking.