





Penn Lane, Tanworth-in-Arden, Solihull, B94 5HH

£1,350,000

5 4 2



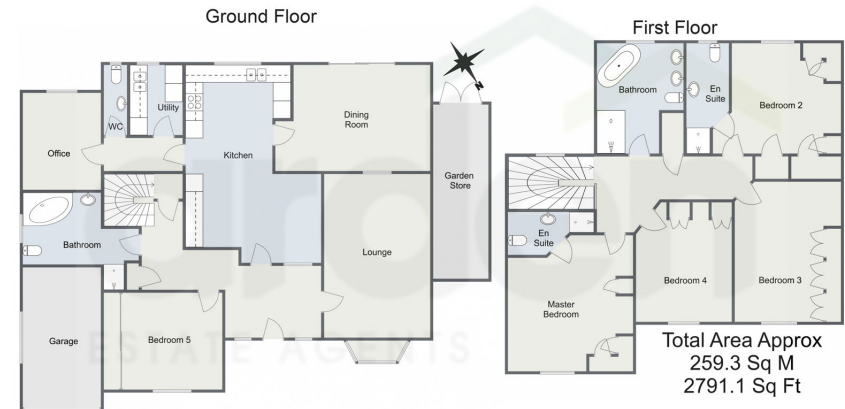
- No Upward Chain
- Sought After Location
- Driveway For Multiple Cars
- Large South Facing Garden
- Five Bedrooms
- Kitchen / Diner
- Lounge
- Utility







Penn Lane, Tanworth-In-Arden, Solihull



For illustrative purposes only. Decorative finishes, fixtures & fittings do not represent the current state of the property. Measurements are approximate & not to scale. Floor Plans made using RoomSketcher.

Nestled on one of Tanworth in Arden's most sought-after roads, this exceptional 5-bedroom detached property combines luxury with comfort. Featuring a large driveway and a garage, this home offers ample space for parking and storage.

09592324 12:17 Energy performance certificate (EPC) - Find an energy certificate - GOV.UK English | [Contact us](#)

### Energy performance certificate (EPC)

Property address Penn Lane, Tanworth-in-Arden, Solihull, B36 9JH	Energy rating <b>C</b>	Valid until 20 April 2033
Property type Detached house	Certificate number 6666-5487-4021-1000	
Total floor area 229 square metres		

**Rules on letting this property**

Properties can be let if they have an energy rating from A to E.

You can read [more about the regulations and exemptions](#) [here](#) or [visit the Energy Performance Certificate website](#).

**Energy rating and score**

The property's energy rating is C. It has the potential to be C.

[See how to improve the property's energy efficiency](#)

Score	Energy rating	Current	Potential
92+	A		
81-91	B		
69-80	C	73 C	80 C
55-68	D		
39-54	E		
21-38	F		
1-20	G		

The graph shows the property's current and potential energy rating.

Properties get a rating from A (best) to G (worst) and a score. The better the rating and score, the lower your energy bills are likely to be.

For properties in England and Wales:

- the average energy rating is D
- the average energy score is 60

**Breakdown of property's energy performance**

<https://find-energy-certificates.service.gov.uk/energy-certificates/09592324-1207-0007-4021-1000>

For more information on this house or to arrange a viewing please call the office on:  
**0121 745 5888**

Alternatively, you can scan the QR to view all of the details of this property online.

