




**Knowlands Road, Shirley, Solihull, B90 4UG**

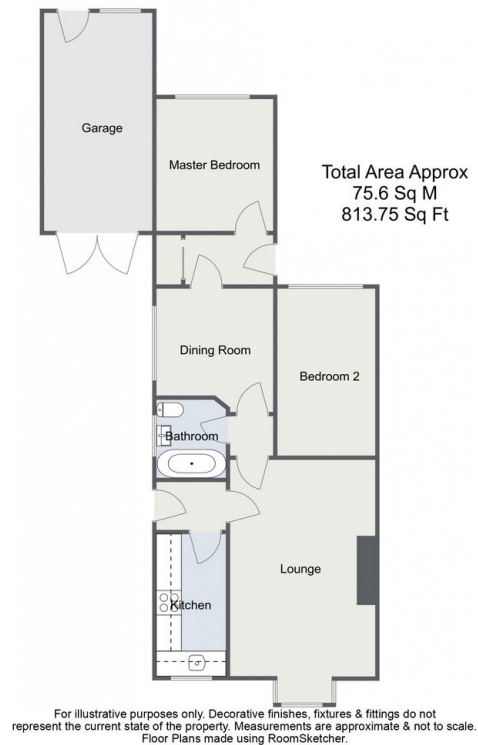
£400,000

 2  1  2



- Two Bedrooms
- Walking Distance To Hillfield Park
- Lounge & Separate Dining Room
- No Onward Chain
- Sought After Location
- Off Road Parking & Driveway
- Near By Local Ameneties
- Rear Garden

Knowlands Road, Solihull  
Ground Floor



This charming 2-bedroom detached bungalow, ideally situated within walking distance to Hillfield Park and nearby local amenities and transport links, offers both convenience and comfort. With off-road parking and a garage, this property is perfect for those seeking a practical and accessible home in a desirable location.